

⚠ Warning


- Do not put this product into water or other liquids as this may cause damage to the user and the product.
- To avoid injuries, do not touch the spiral hook with hands or other body parts.
- Children are not allowed to use this product.
- Users are not allowed to disassemble the product as it can affect the warranty.
- Do not press the product against the bottle using brute force or try to speed up the opening process. This product works best at its set speed.
- Please do not use this product for any other purposes.
- Do not use this product in the presence of flammable or explosive gases.
- Misuse may cause hazard. Always disconnect the appliance from the supply if it is left unattended and before assembling, disassembling or cleaning.
- This appliance can be used by children aged from 8 years and above if they have been given supervision or instruction concerning use of the appliance in a safe way and if they understand the hazards involved. Cleaning and user maintenance shall not be made by children unless they are aged from 8 years and above and supervised. Keep the appliance and its cord out of reach of children aged less than 8 years.

1


- Appliances can be used by persons with reduced physical, sensory or mental capabilities or lack of experience and knowledge if they have been given supervision or instruction concerning use of the appliance in a safe way and if they understand the hazards involved.
- Children shall not play with the appliance.
- This appliance is intended to be used in household and similar applications such as:
 - staff kitchen areas in shops, offices and other working environments;
 - farm houses;
 - by clients in hotels, motels and other residential type environments;
 - bed and breakfast type environments.
- Switch off the appliance and disconnect from supply before changing accessories or approaching parts that move in use.

2

- Battery-operated appliances
 - Four No. 5 batteries
 - Press and hold the button on the back of the opener to open the battery cover, and the battery cover will be cocked. Remove the battery cover, insert four No. 5 dry cells (alkaline) according to the direction of the positive and negative poles indicated in the battery compartment, and then close the battery cover.
 - non-rechargeable batteries are not to be recharged;
 - different types of batteries or new and used batteries are not to be mixed;
 - batteries are to be inserted with the correct polarity;
 - exhausted batteries are to be removed from the appliance and safely disposed of;
 - if the appliance is to be stored unused for a long period, the batteries should be removed;
 - the supply terminals are not to be short-circuited.

 All products bearing this symbol are waste electrical and electronic equipment (WEEE as in directive 2012/19/EU) which should not be mixed with unsorted household waste. Instead, you should protect human health and the environment by handing over your waste equipment to a designated collection point for the recycling of waste electrical and electronic equipment, appointed by the government or local authorities. Correct disposal and recycling will help prevent potential negative consequences to the environment and human health. Please contact the installer or local authorities for more information about the location as well as terms and conditions of such collection points.

3

 We Shanghai HOTO Technology Co., Ltd., hereby, declares that this equipment is in compliance with the applicable Directives and European Norms, and amendments.

Federal Communications Commission Supplier's Declaration of Conformity

Product: HOTO Electric Wine Opener
Model Number(s): QWKQP001
Brand/Trade: HOTO

We declare that the above mentioned device has been tested and found in compliance with CFR 47 Part 15 Regulation.

This device complies with part 15 of the FCC Rules. Operation is subject to the following two conditions: (1) This device may not cause harmful interference, and (2) this device must accept any interference received, including interference that may cause undesired operation.

4

Note: This equipment has been tested and found to comply with the limits for a Class B digital device, pursuant to part 15 of the FCC Rules. These limits are designed to provide reasonable protection against harmful interference in a residential installation. This equipment generates, uses and can radiate radio frequency energy and, if not installed and used in accordance with the instructions, may cause harmful interference to radio communications. However, there is no guarantee that interference will not occur in a particular installation. If this equipment does cause harmful interference to radio or television reception, which can be determined by turning the equipment off and on, the user is encouraged to try to correct the interference by one or more of the following measures:

- Reorient or relocate the receiving antenna.
- Increase the separation between the equipment and receiver.
- Connect the equipment into an outlet on a circuit different from that to which the receiver is connected.
- Consult the dealer or an experienced radio/TV technician for help.

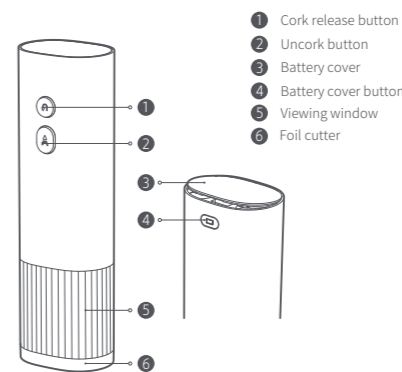
Representative of Responsible Party for SDoC

Company: Shanghai HOTO Technology Co., Ltd.
Address: Building 45, No.50 Moganshan Road, Shanghai, China
Country: China
Telephone No.: 400-021-8696

5

Product Overview

Read this manual carefully before use, and retain it for future reference.
Thanks for using HOTO Electric Wine Opener.



6

How to Use

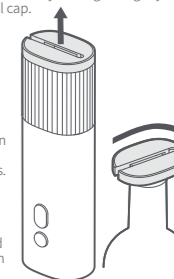
Battery Installation

- Press and hold the button on the back of the opener to unlock the battery cover.
- Remove the battery cover and insert four No.5 dry cells (alkaline) according to the direction of the positive and negative poles indicated in the battery compartment.
- Close the battery cover when finished.



Bottle Opening

- Pinch the foil cutter and pull it out. Take the cutter and place it around the mouth of the bottle and turn your fingers slightly from left to right to cut off the foil cap.
- Hold the bottle firmly in one hand and the opener in the other. Place the lower end of the opener over the mouth of the wine bottle, and try to keep the opener in vertical position aligned with the bottle.
- Press and hold the uncork button while pressing down on the opener for about 8 to 10 seconds. The opener will automatically remove the cork from the bottle. Once the cork is completely removed, the opener will automatically stop spinning, and the opener may be released from the bottle.



7

Maintenance

- Press and hold the cork release button for about 5-8 seconds, and the cork will gradually unscrew from the opener. Release the button after the cork completely releases from the opener.

Battery Replacement

- Replace the battery if it is hard to uncork or the rotative speed is slow.

Tips:

- This product is only suitable for corks with a diameter of 20 to 24mm and a height of 38mm.
- This product is only suitable for mouth bottles with an outside diameter of up to 35mm and an inside diameter of 17.5 to 23mm.
- For a fast high-quality opening experience, it is recommended to use batteries with guaranteed quality with a manufacturing day within the month.

8

Troubleshooting

In the event that the opener breaks down during use, please follow the following handling methods:

Issues	Possible Causes	Solutions
The opener does not respond or ceases to work when uncorking	Batteries are misplaced	Please install the batteries correctly
	Low battery level	Please replace the four No. 5 dry cells (alkaline)
	The opener was not properly aligned with the bottle during opening. Tilted opening.	Press the cork release button until the opener fully detaches. Reopen the bottle after ensuring that the opener is correctly aligned with the bottle
Opener faults		Please contact Customer Service
Takes too long to uncork	The tip of the spiral hook of the opener does not drill into the wine cork in time	While pressing the uncork button, slightly press down on the opener
The foil covering the mouth of the bottle is not completely removed	The blade of the foil cutter does not clamp tightly to the mouth of the bottle	When cutting the foil, hold the foil cutter firmly to ensure that the blade is tightly clamped to the bottle mouth
	Parallel rotation from left to right does not allow more than half a circle	Hold the foil cutter firmly and make several parallel turns from left to right

9

Specifications

Model: QWKQP001
Item Dimensions: 59.9×44.7×185.4mm (excluding the foil cutter)
Net Weight: About 250g
Rated Voltage: 6.0V \approx
Rated Power: 15W
Working Temperature: 10°C~40°C
Storage Temperature: -10°C~50°C
Storage Humidity: \leq 90%RH
Battery Type: AA Battery×4
Opener Material: Stainless steel, ABS
Foil Cutter Material: Stainless iron, ABS

Manufacturer: Shanghai HOTO Technology Co., Ltd.
Address: Building 45, No. 50 Moganshan Rd, Putuo District, Shanghai, PRC, 200060.

10

DECLARATION OF CONFORMITY



EU Declaration of Conformity
We

Shanghai HOTO Technology Co., Ltd.
Declare that the product:
HOTO Electric Wine Opener / QWKQP001

References to the following harmonized standard were made:
EN 60335-1:2012 + A11:2014 + A13:2017 + A1:2019 + A14:2019 + A2:2019 + A15:2021
EN 60335-2-14:2006 + A1:2008 + A11:2012 + A12:2016 EN 62233:2008

2014/30/EU Electromagnetic Compatibility directive References to the following harmonized standard were made:

EN 55014-1:2021
EN 55014-2:2021

2011/65/EU+ (EU) 2015/863 Restrictions of the Use of Certain Hazardous Substances in Electrical and Electronic Equipment

Authorised signatory and technical file holder:
Shanghai HOTO Technology Co., Ltd.
Building 45, No.50 Moganshan Road, Shanghai, China

11

DECLARATION OF CONFORMITY



UK Declaration of Conformity
We

Shanghai HOTO Technology Co., Ltd.
Declare that the product:
HOTO Electric Wine Opener/QWKQP001

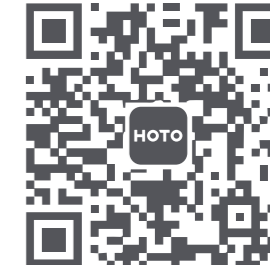
Complies with the essential health and safety requirements of the following directives:
Electromagnetic Compatibility Regulations 2016 Electromagnetic Compatibility directive References to the following harmonized standard were made:

BS EN 60335-1:2012+A11:2014+A13:2017+A1:2019+A14:2019+A2:2019+A15:2021
BS EN 60335-2-14:2006 + A1:2008 + A11:2012 + A12:2016

BS EN 62233:2008
BS EN 55014-1:2021
BS EN 55014-2:2021

Electronic Equipment Regulations 2012 (S.I. 2012/3032) (as amended) Restrictions of the Use of Certain Hazardous Substances in Electrical and Electronic Equipment
Authorised signatory and technical file holder:
Shanghai HOTO Technology Co., Ltd.
Building 45, No.50 Moganshan Road, Shanghai, China

12



Stay tuned to our social media
(@hoto_official)

13